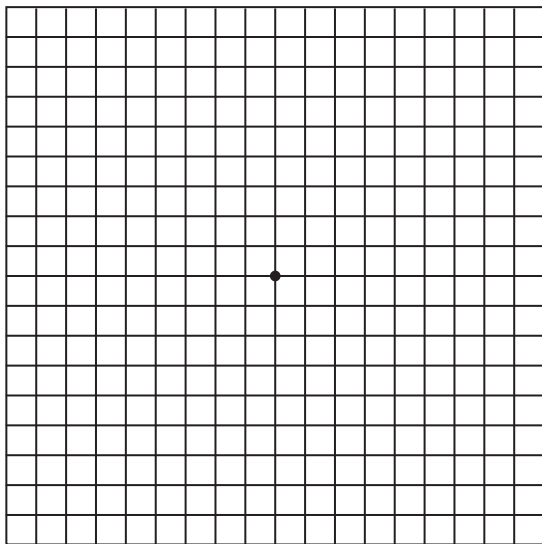


# AMSLER GRID TESTING CHART



1. Wear your corrective lenses for near vision.
2. Position the chart 14-inches away from your face.
3. Cover one eye at a time with your hand.
4. Stare at the dot in the center with your non covered eye.  
Do NOT drift focus away from the dot.
5. Contact us immediately at **320-257-4990** if you see any changes or if any lines appear wavy, bent or missing.



*Clearly See the Difference!*

210 2ND AVENUE NORTH  
SAUK RAPIDS, MN 56379

[WWW.INFINITEEYECARE.COM](http://WWW.INFINITEEYECARE.COM)